



ISTITUTO ISTRUZIONE SUPERIORE ITAS ITC  
ROSSANO



☎ 0983/511227 📠 0983/290689

CSIS04600Q - C.F. 97022350785

[www.itasitcrossano.edu.it](http://www.itasitcrossano.edu.it)

E-MAIL: [csis04600q@istruzione.it](mailto:csis04600q@istruzione.it) [csis04600q@pec.istruzione.it](mailto:csis04600q@pec.istruzione.it)



## AGGIORNAMENTO DVR

18/09/2020

RISCHIO BIOLOGICO DA ESPOSIZIONE SARS-CoV2 E RISCHIO DA  
SMART WORKING CONNESSO ALLA DIDATTICA A DISTANZA  
PIANO UTILIZZAZIONE LOCALI PLESSI ITAS-ITC

PLANIMETRIE SISTEMAZIONI AULE PLESSI ITAS - ITC

DIRIGENTE SCOLASTICO  
D.SSA ANNA MARIA DI CIANNI

RSPP  
ING. ROCCO TASSONE

MEDICO COMPETENTE

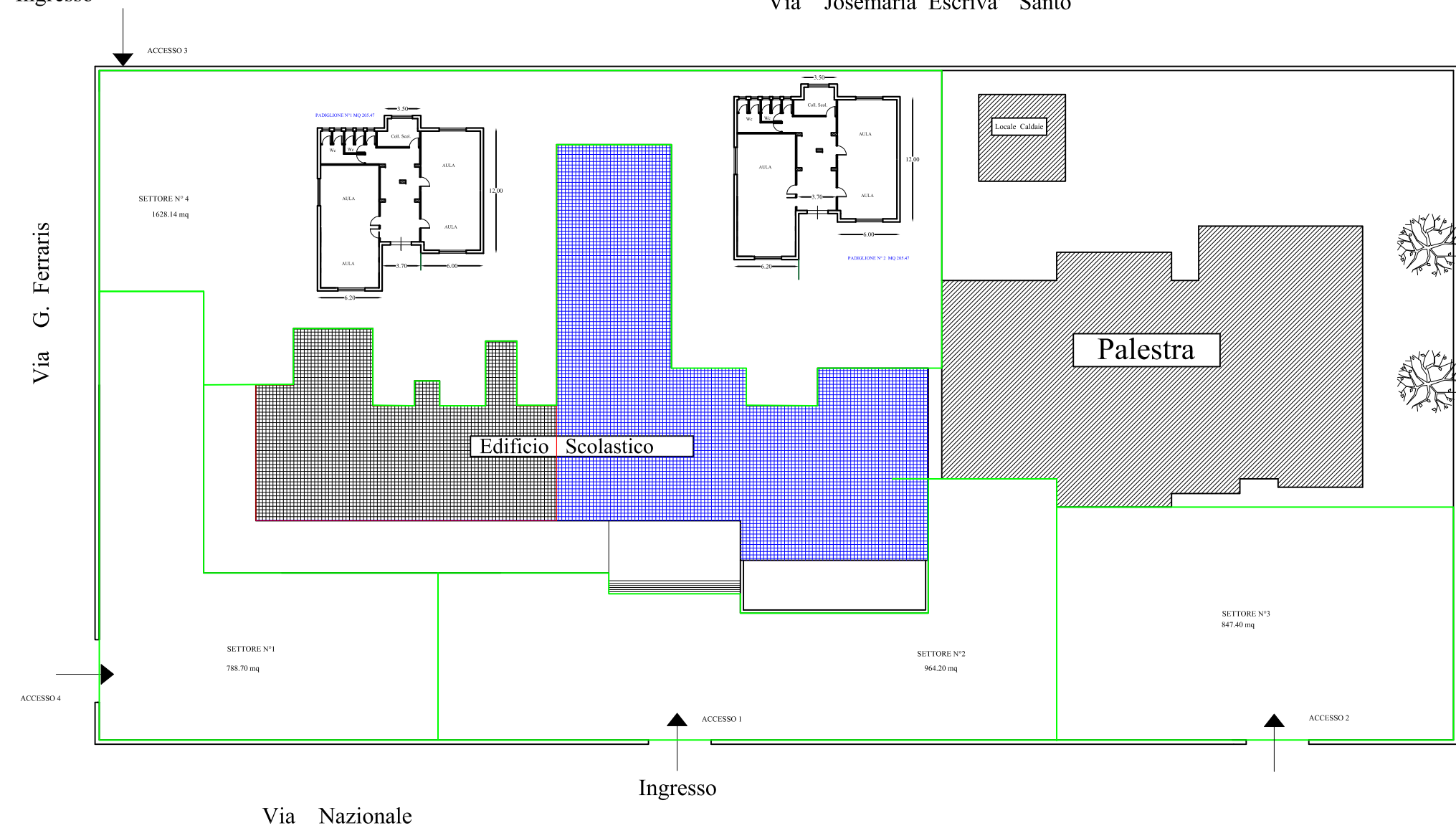
RLS  
SIG. COSIMO CAPALBO

ROSSANO:18/09/2020

# PLANIMETRIA PLESSO ITC VIA NAZIONALE

Ingresso

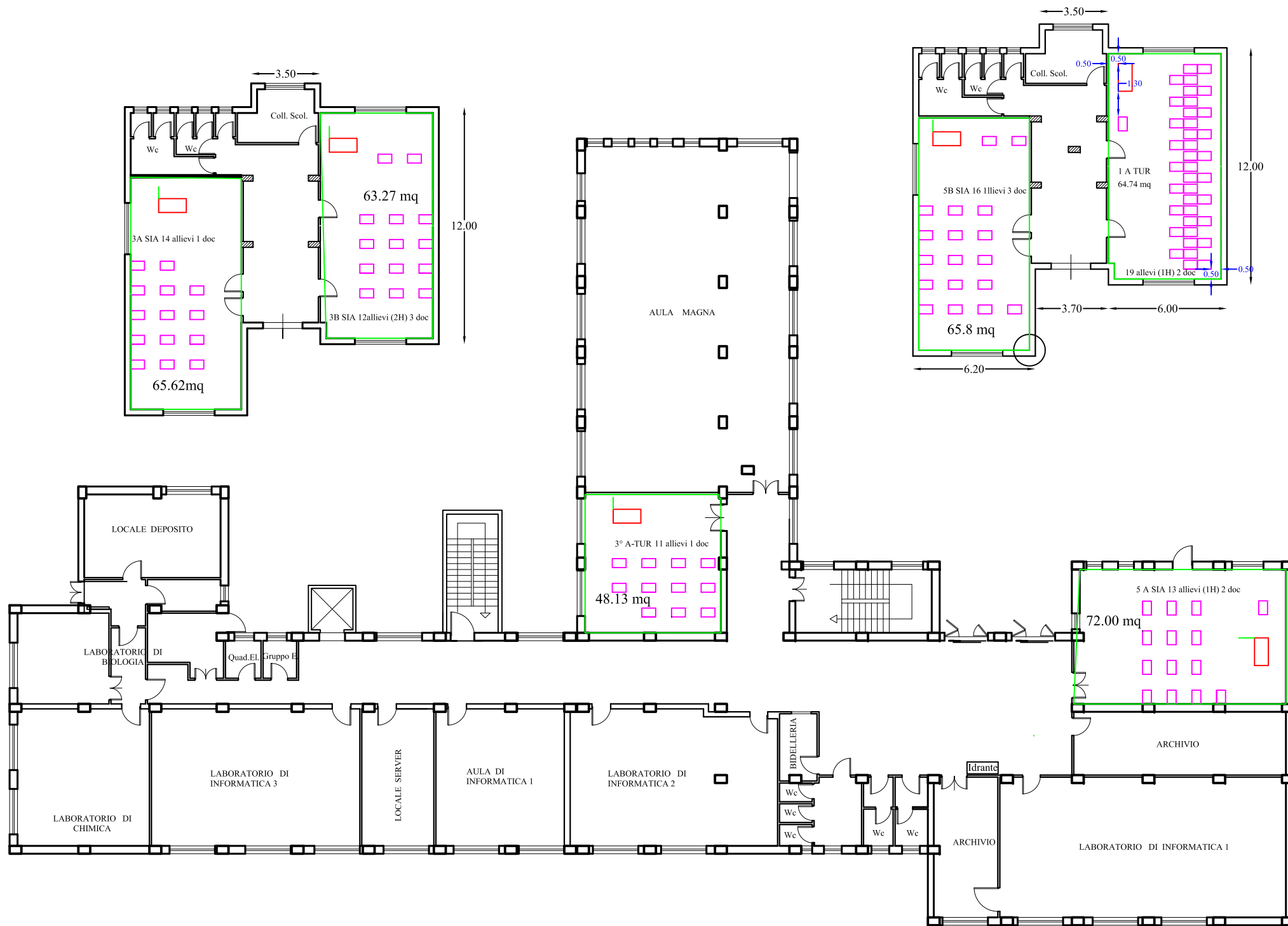
Via Josemaria Escriva' Santo



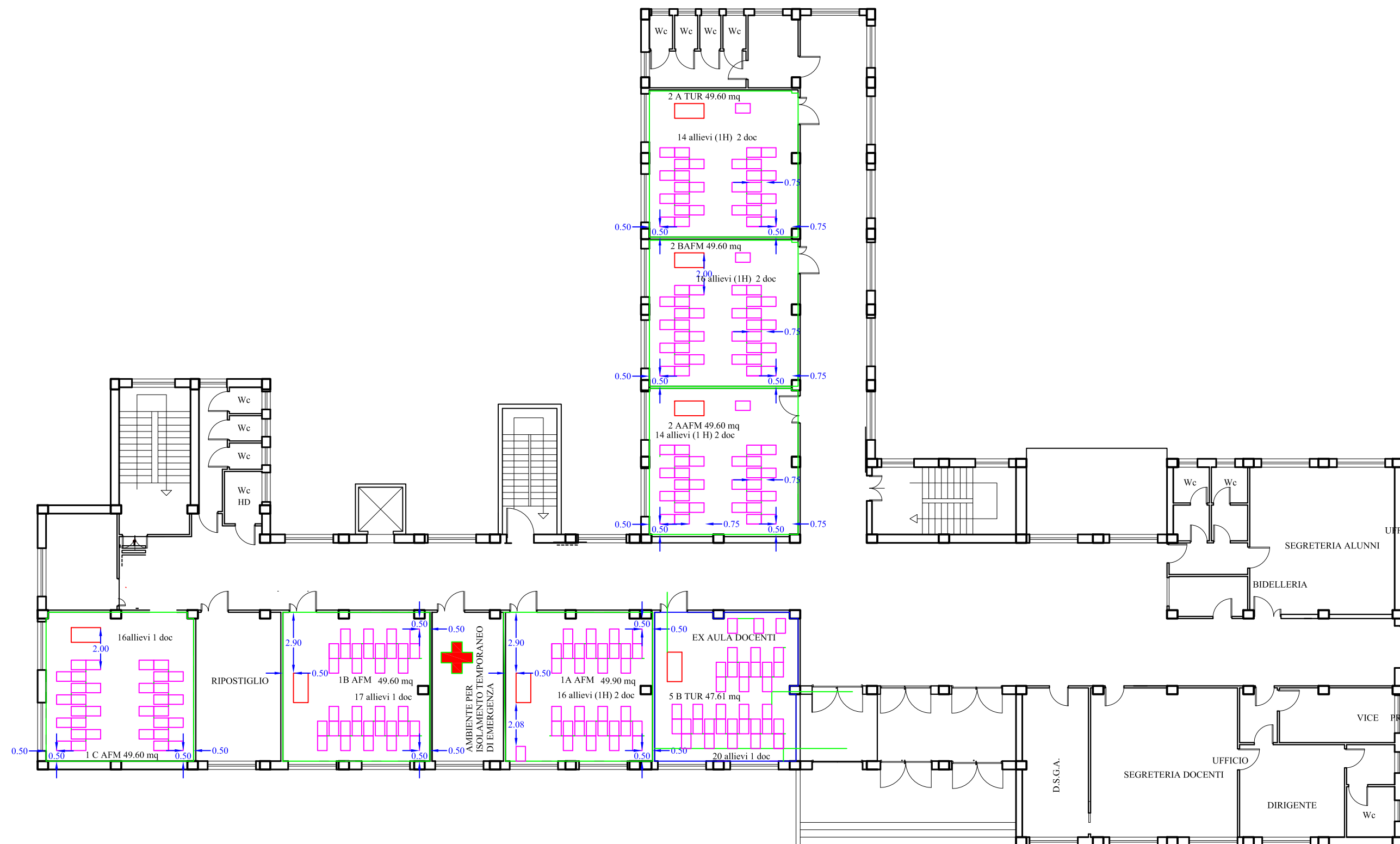
Via G. Ferraris

Via Nazionale

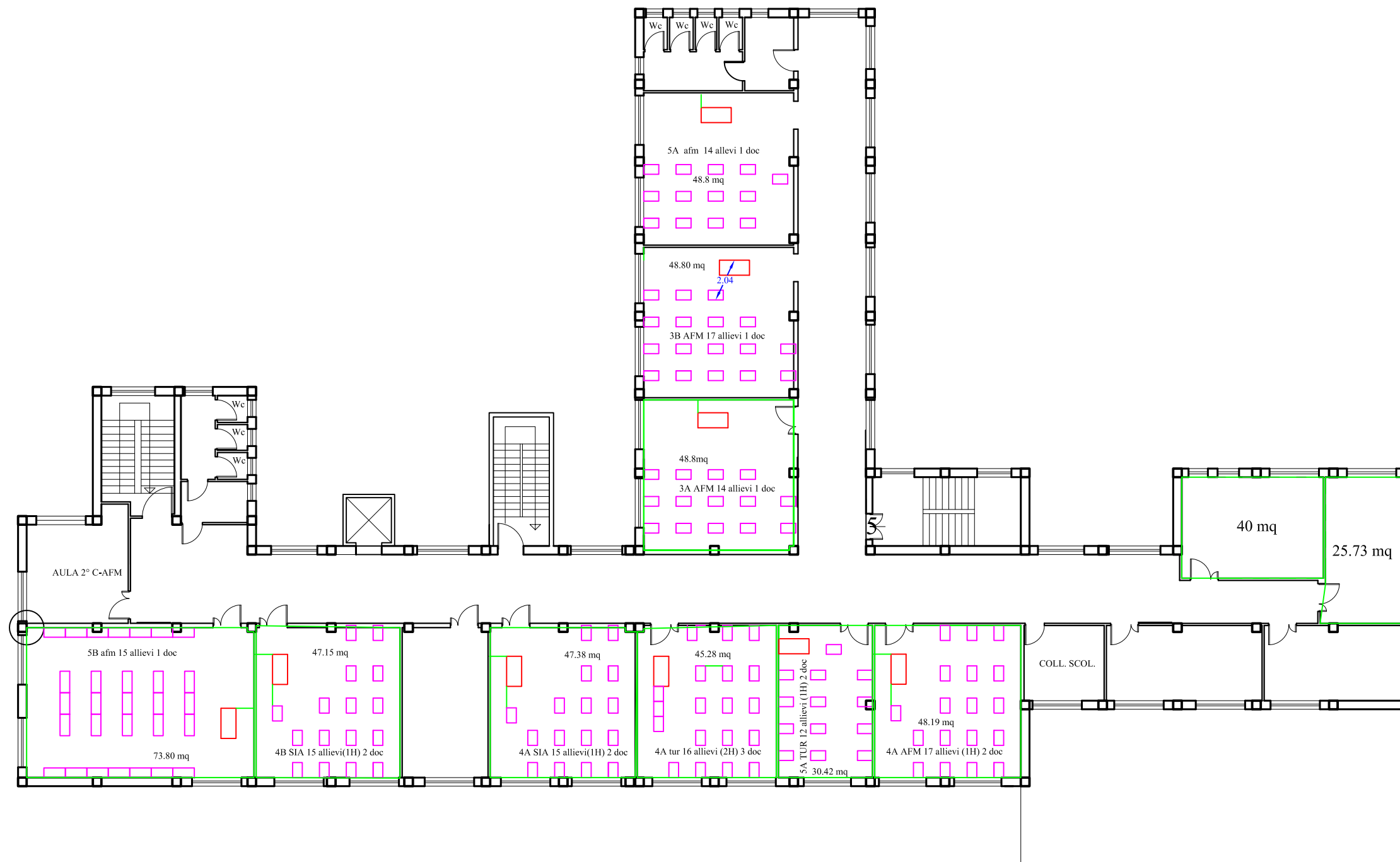
# PIANO SEMINTERRATO



# PIANO RIALZATO

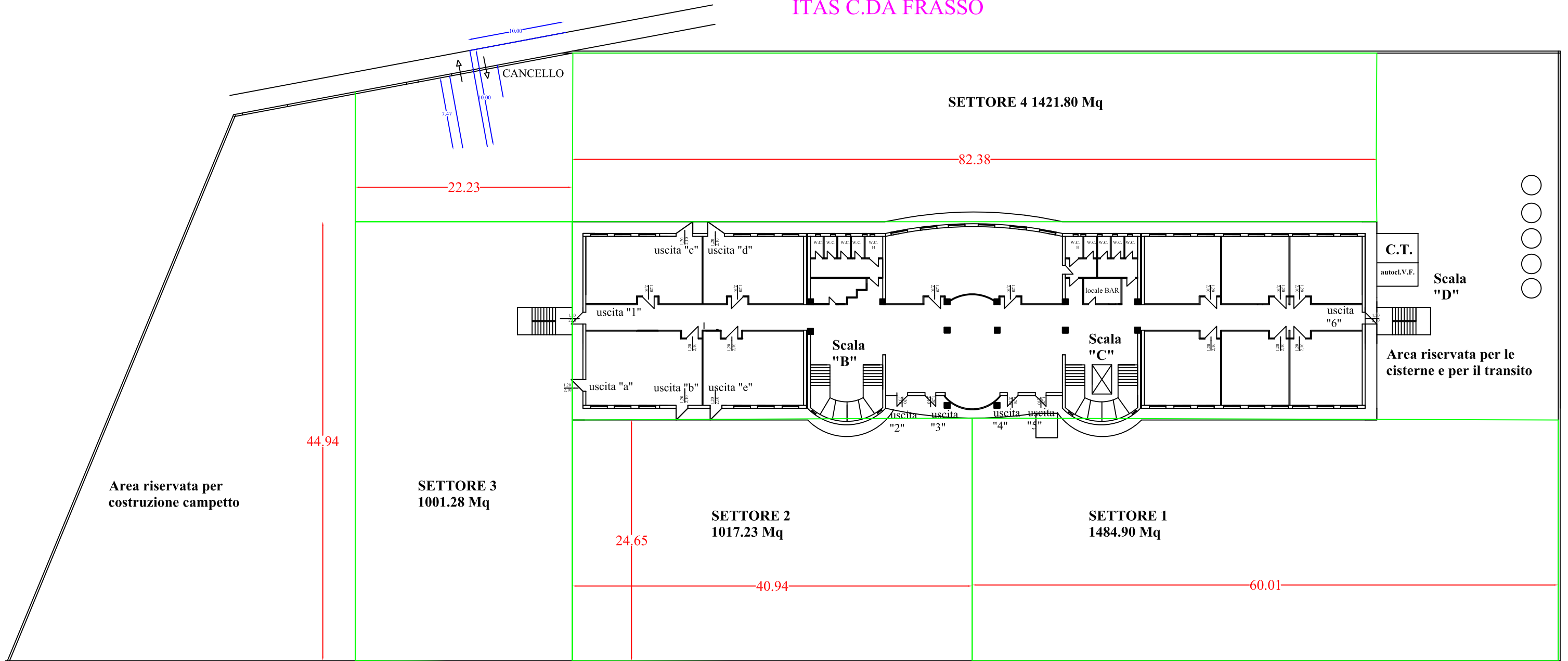


# PIANO PRIMO

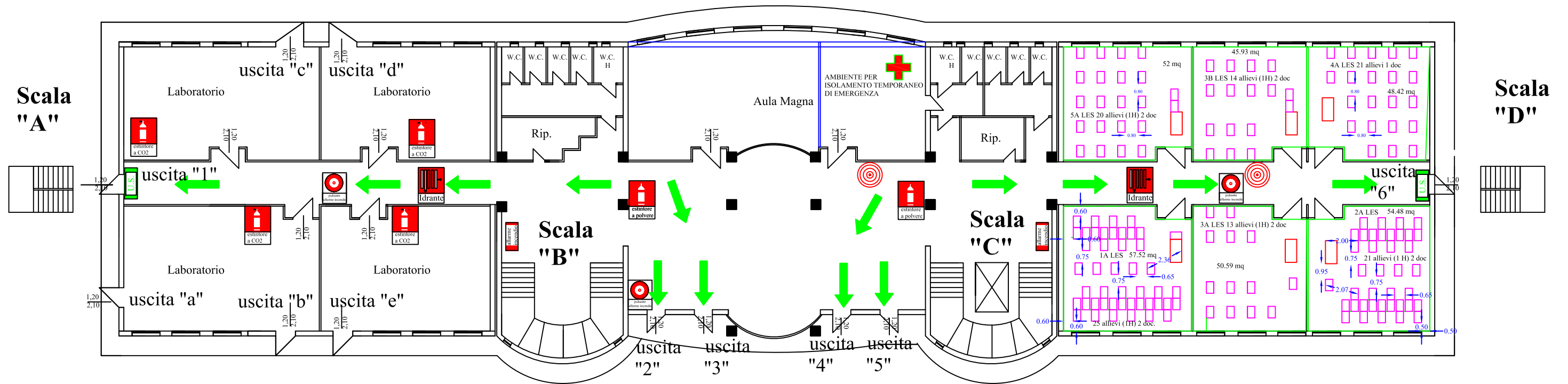


# PLANIMETRIA GENERALE

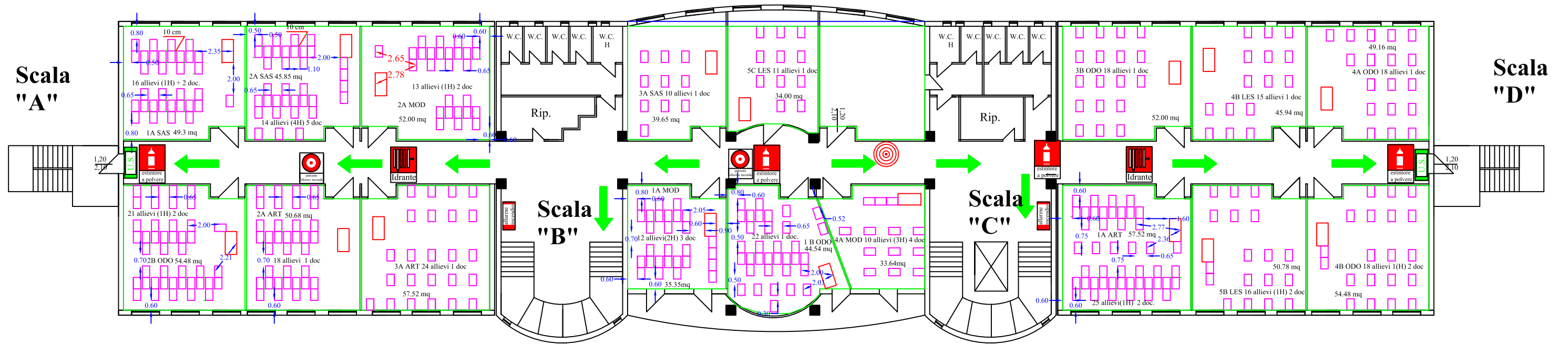
## ITAS C.DA FRASSO



# PIANO TERRA

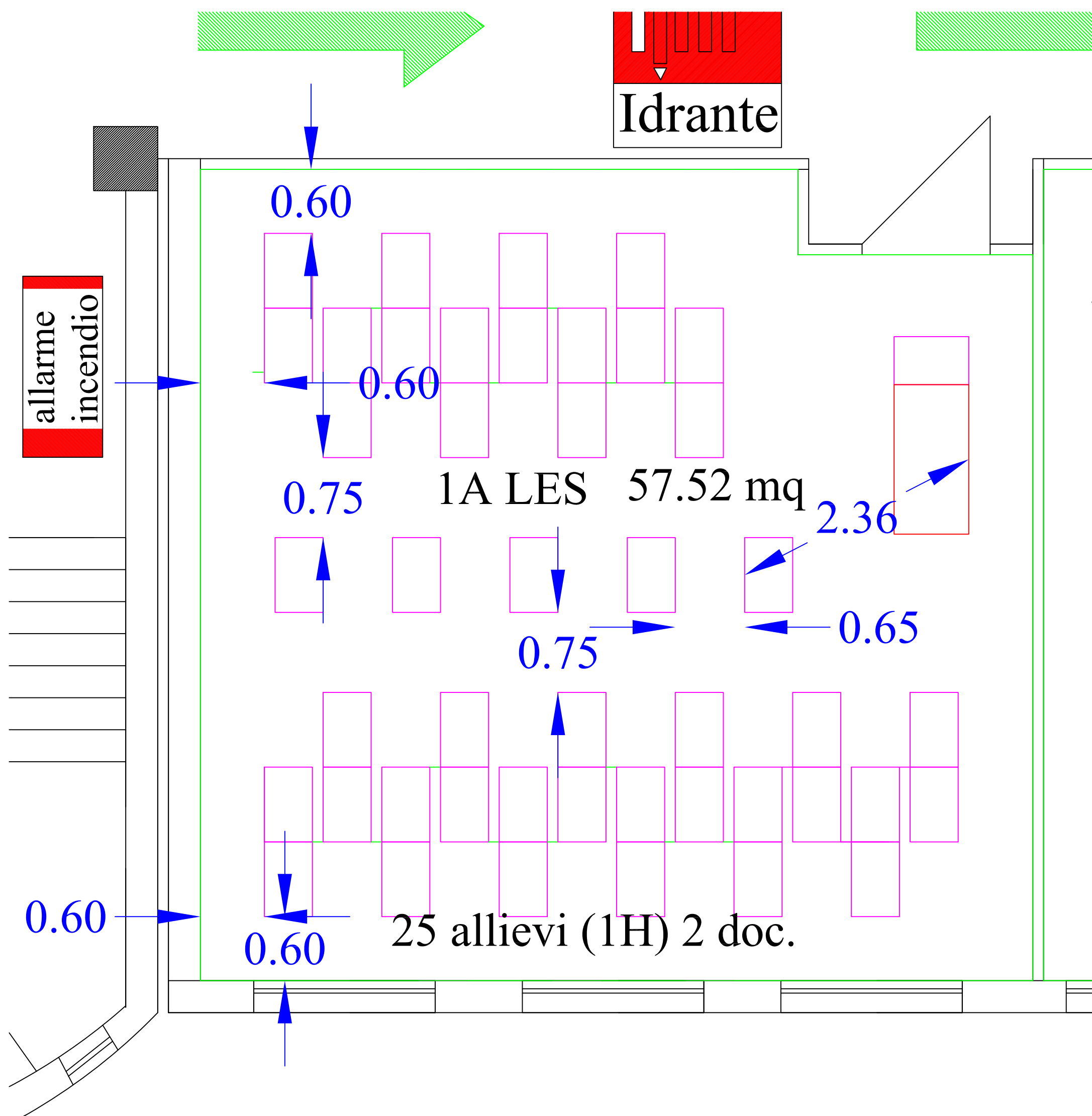


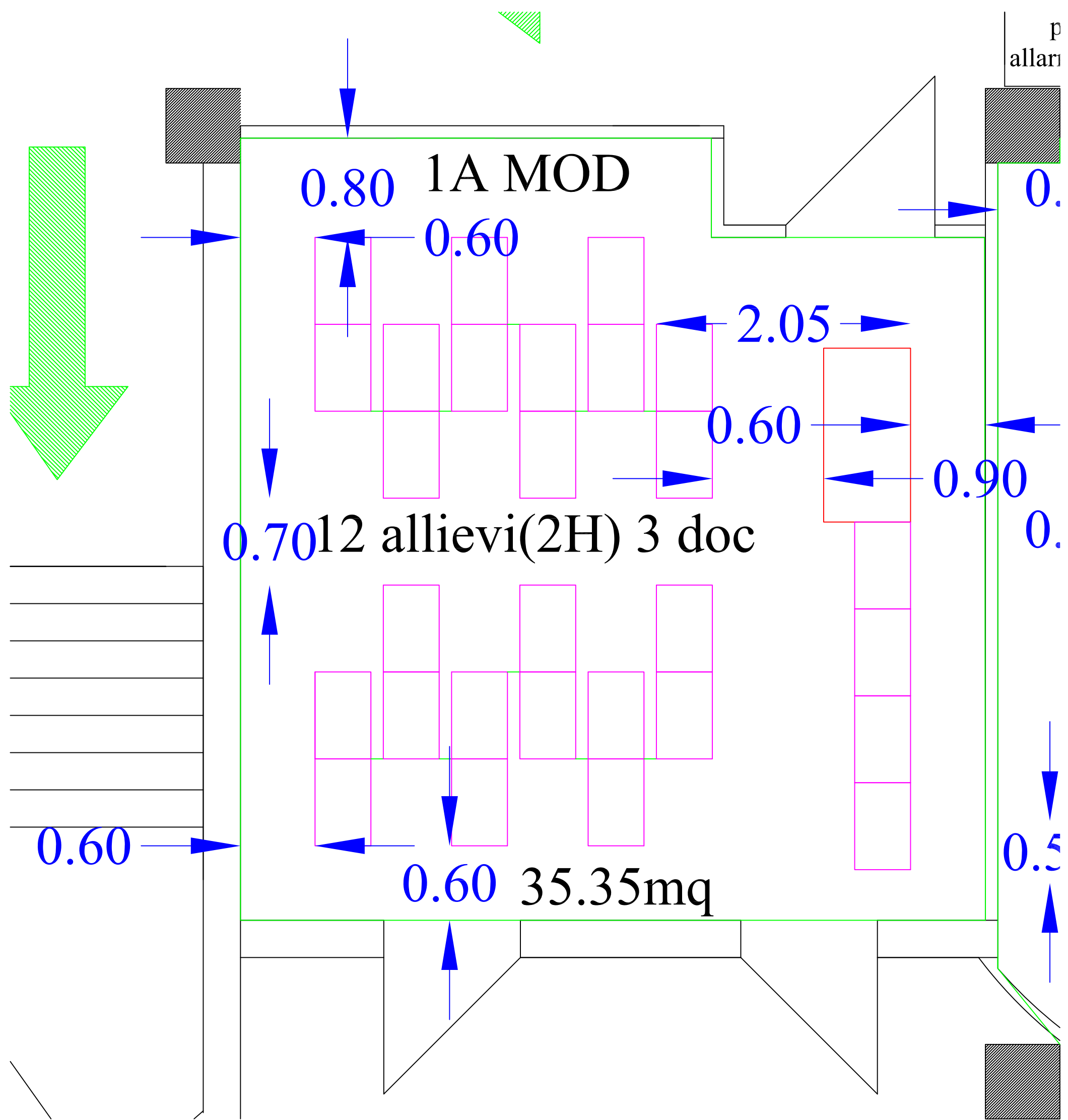
# PIANO PRIMO



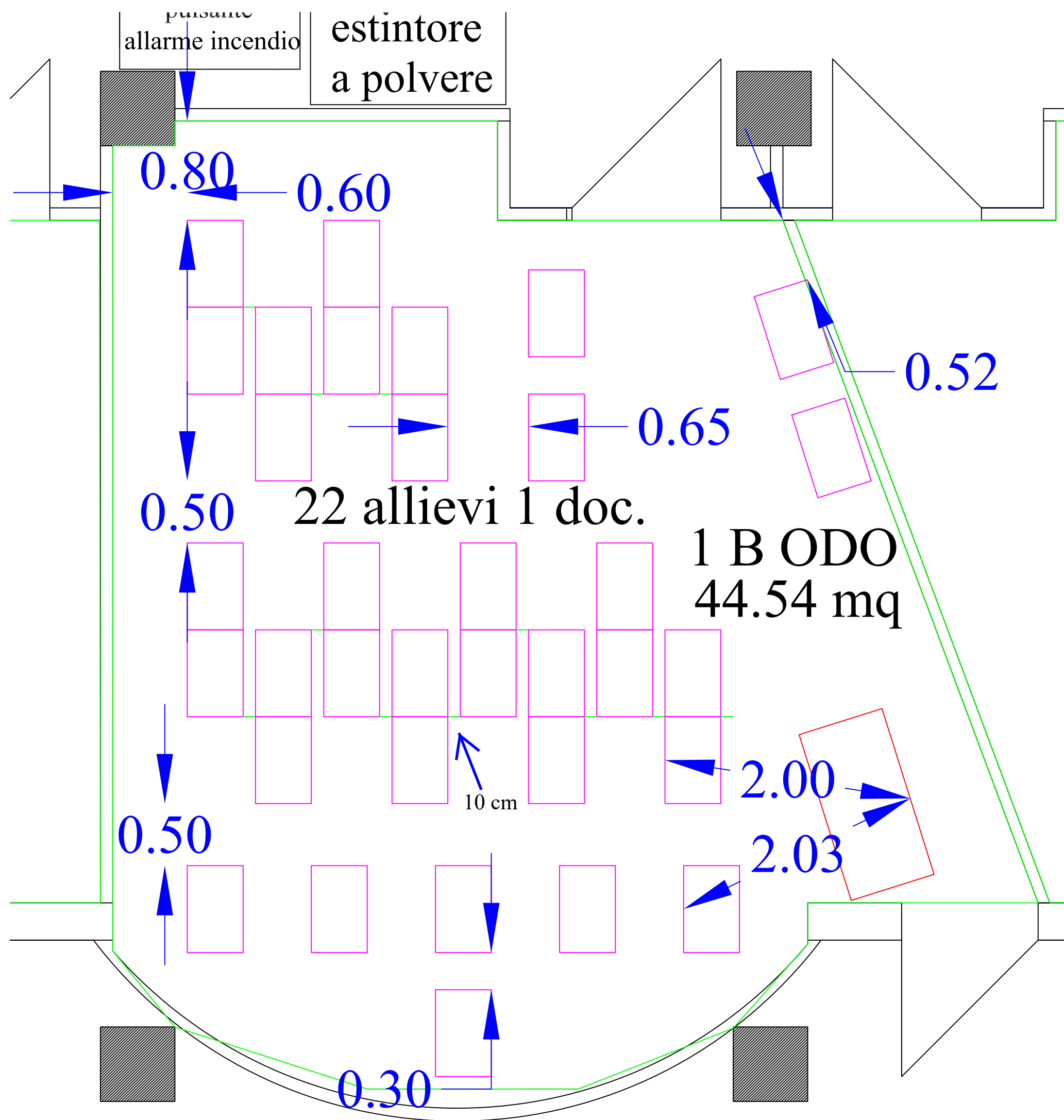


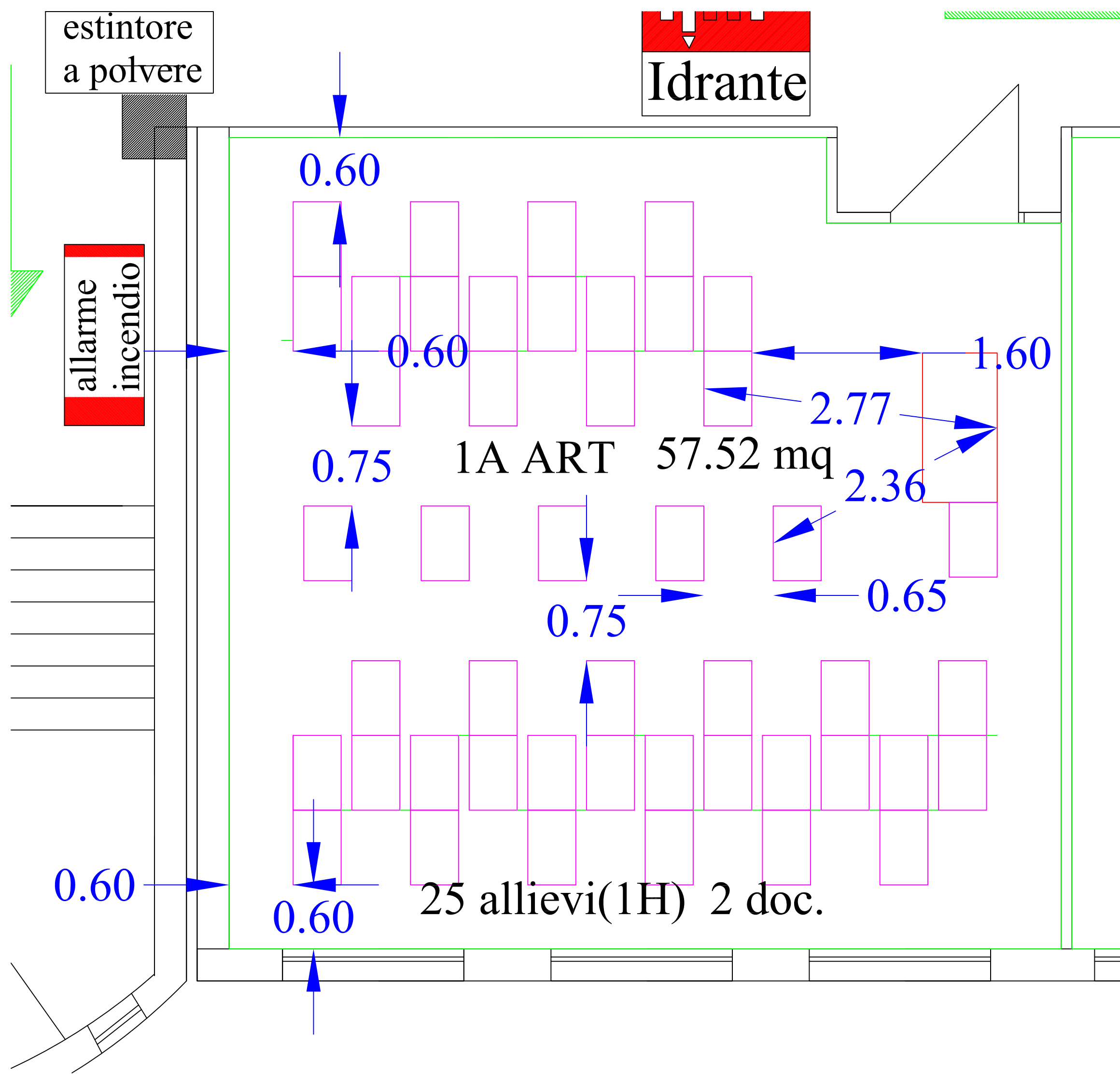
PLANIMETRIE DI DETTAGLIO SISTEMAZIONE  
CLASSI BIENNIO ITAS



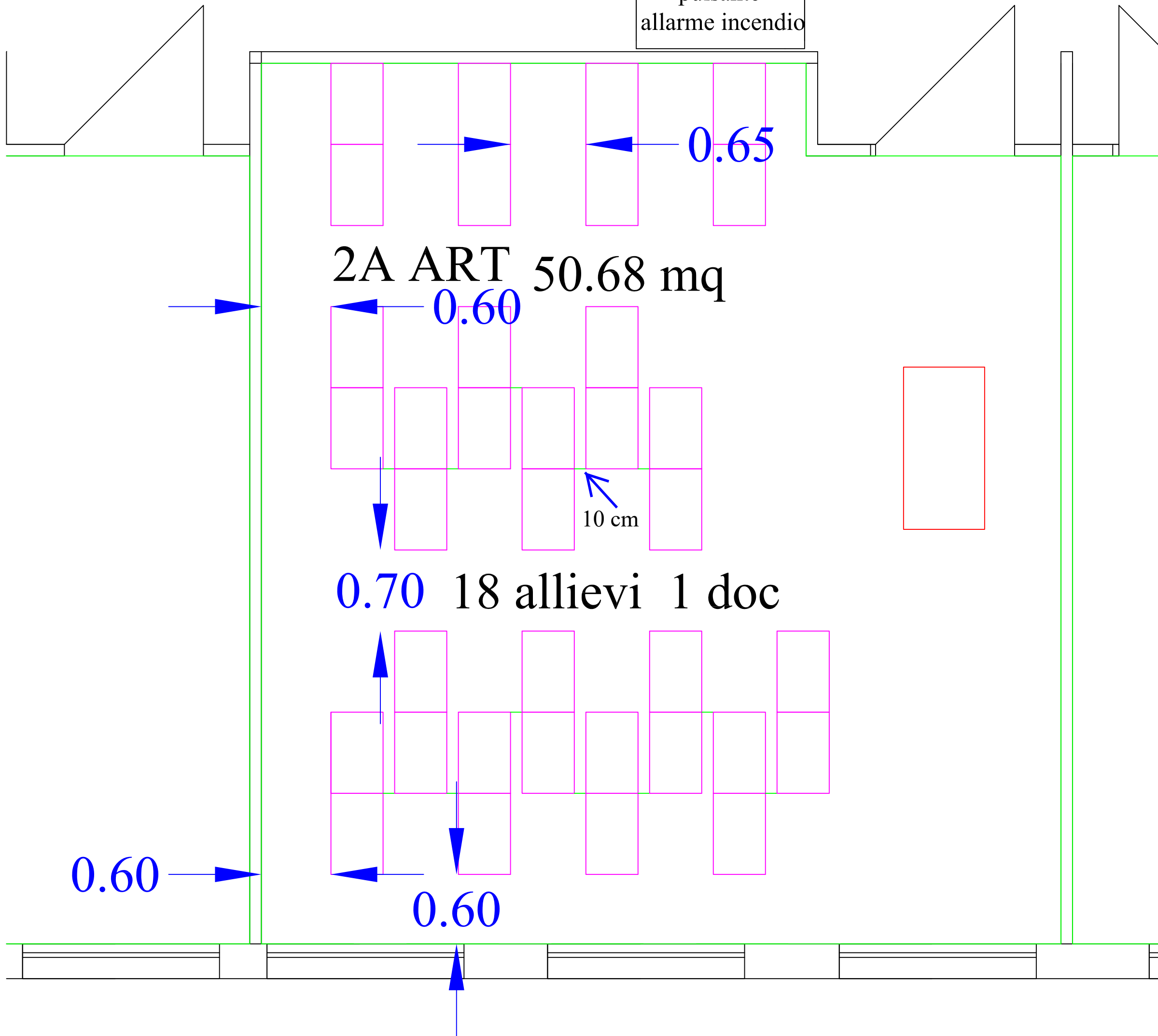








pulsante  
allarme incendio



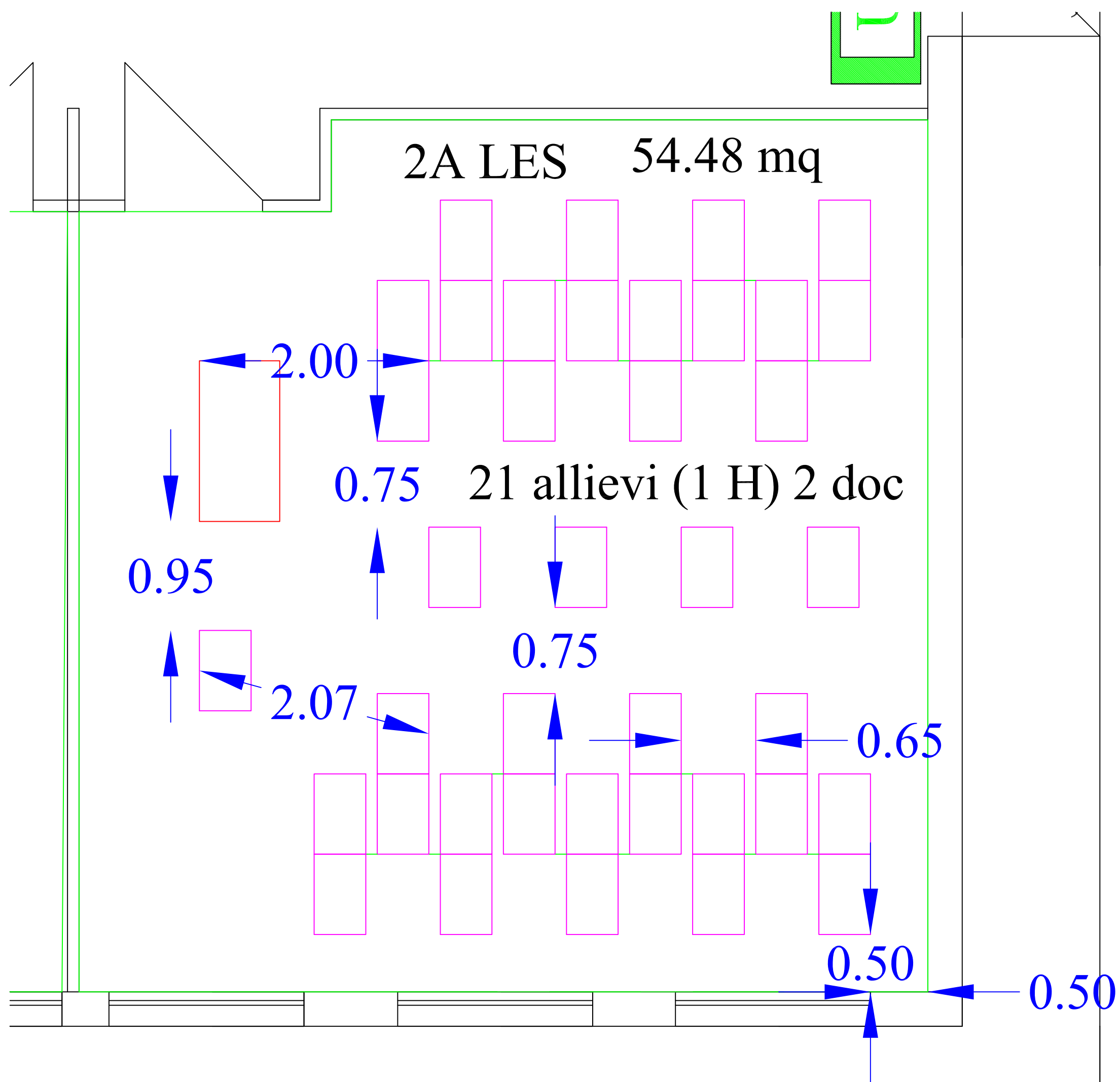
2A ART 50.68 mq

0.70 18 allievi 1 doc

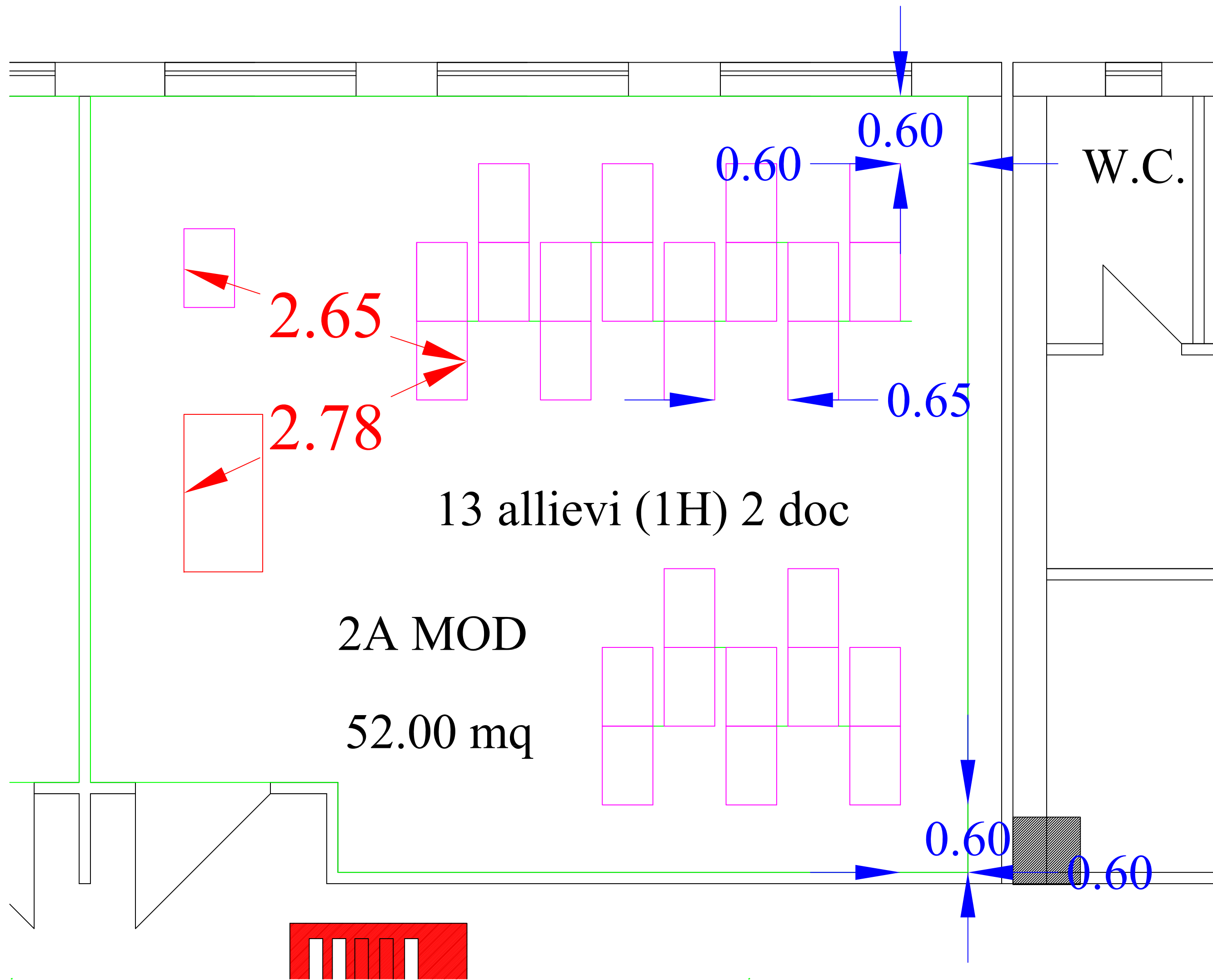
0.60

0.60

10 cm







2.65

2.78

13 allievi (1H) 2 doc

2A MOD

52.00 mq

0.60

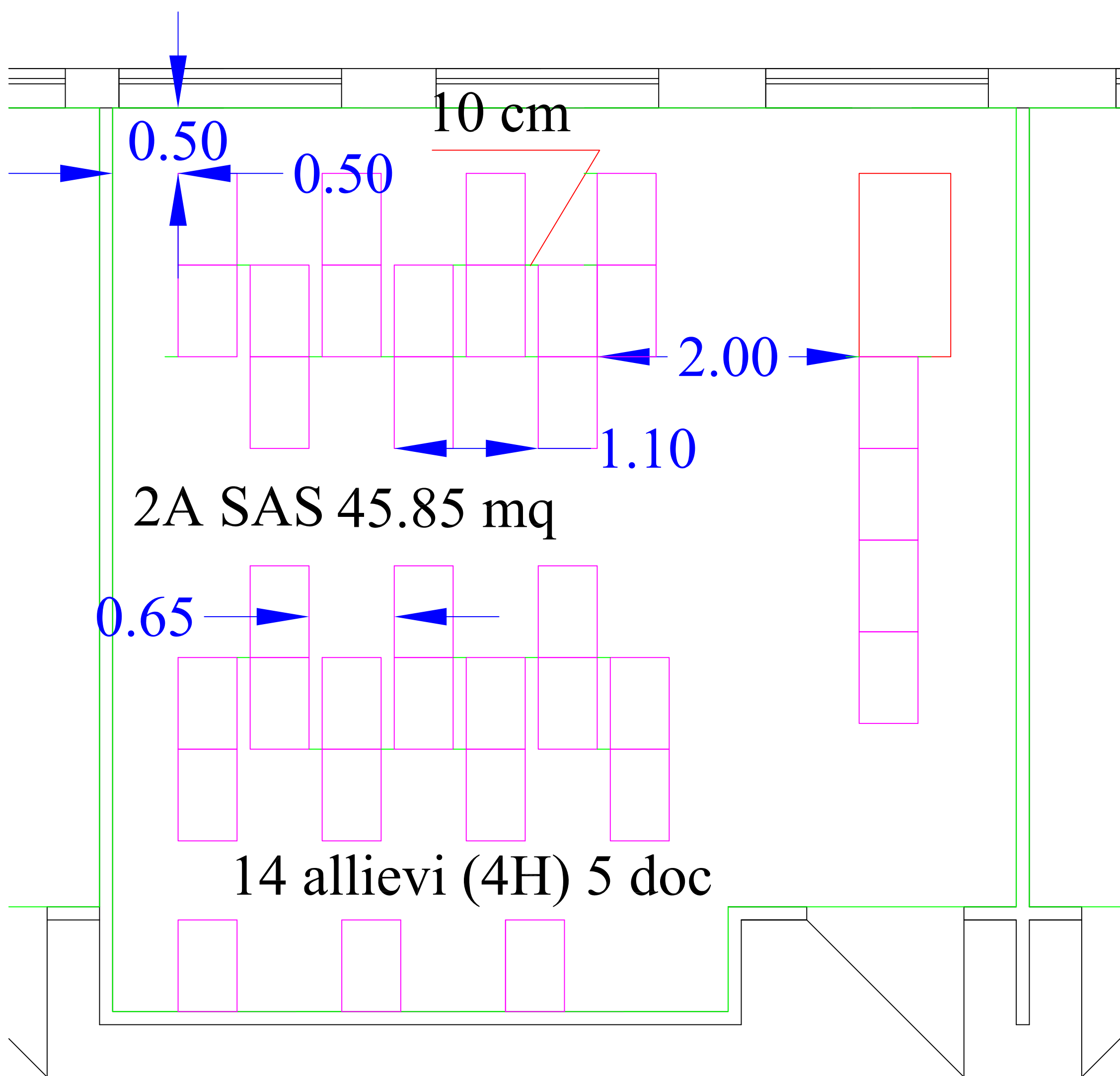
0.60

0.65

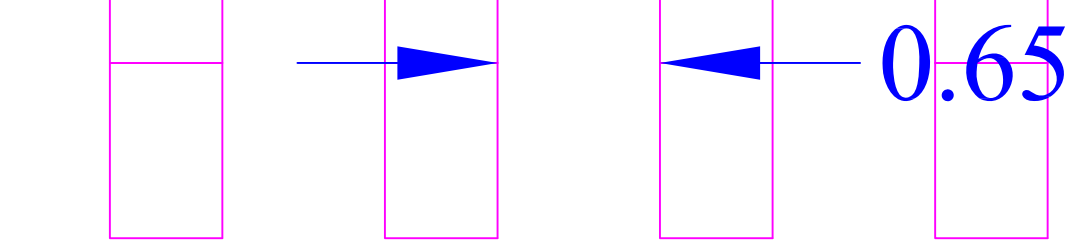
0.60

0.60

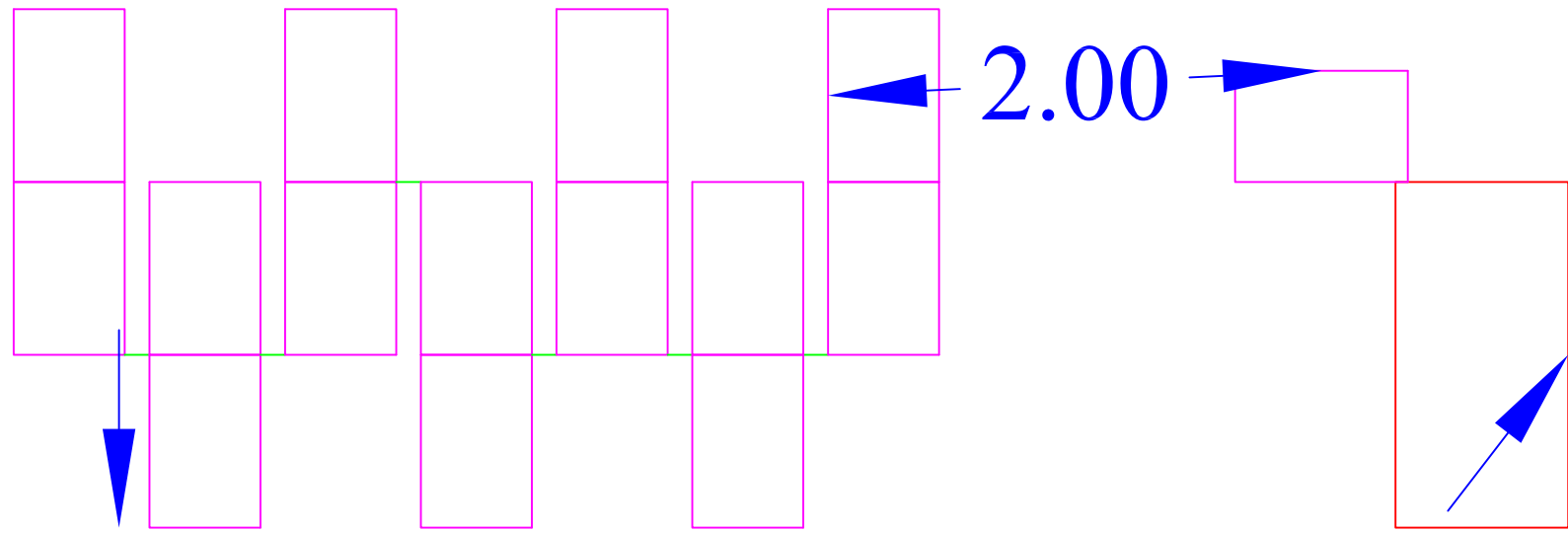
W.C.



a povero

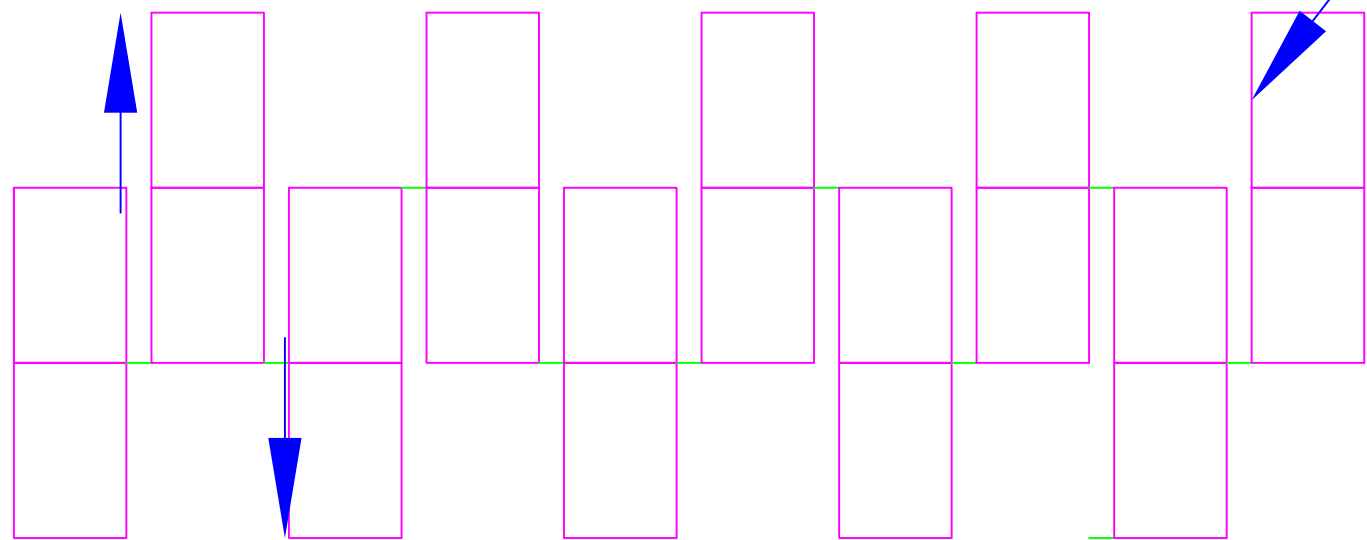


21 allievi (1H) 2 doc

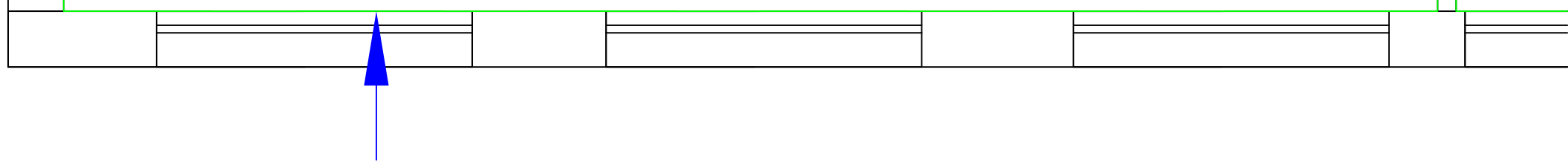


0.702B ODO 54.48 mq

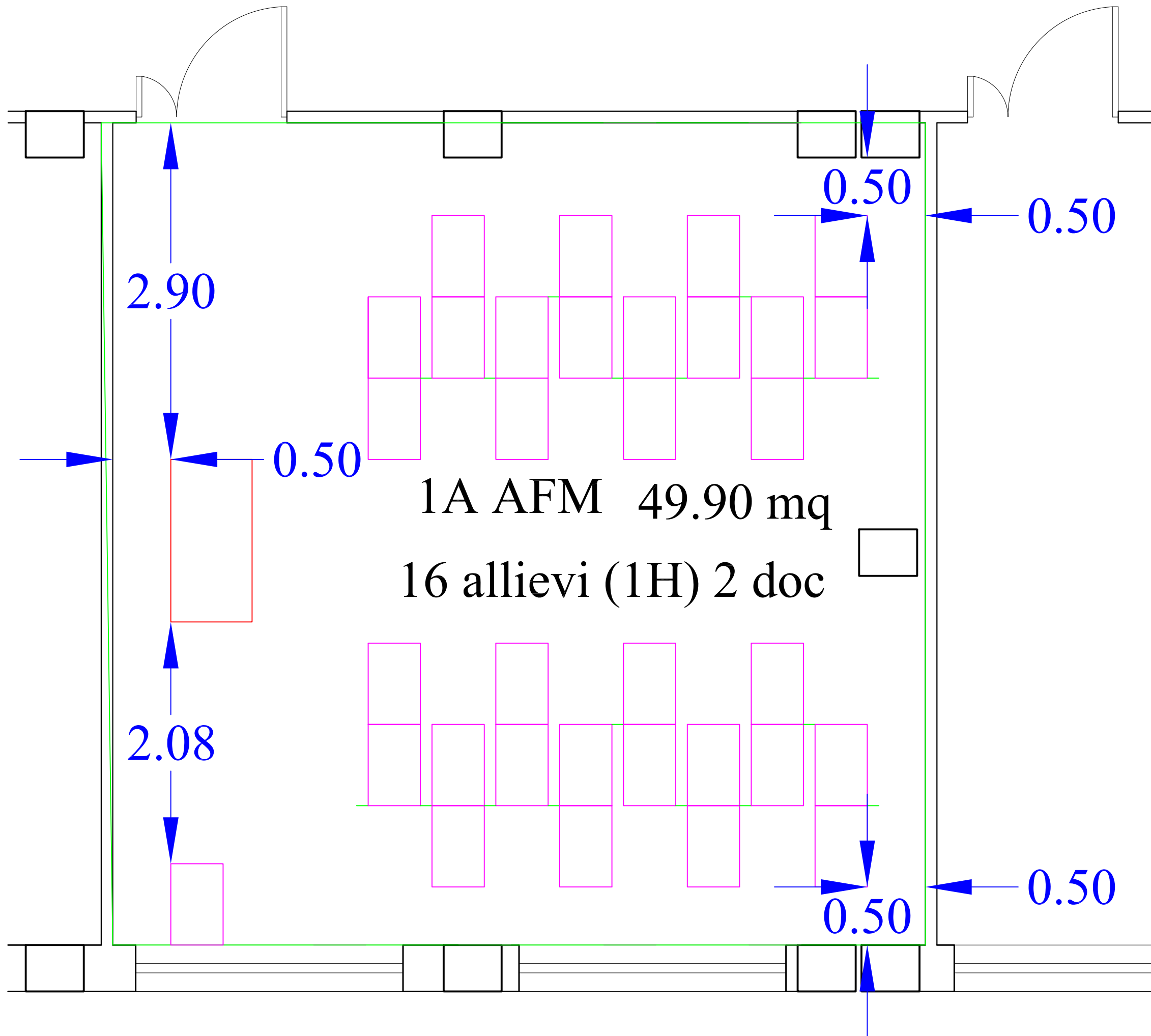
2.21

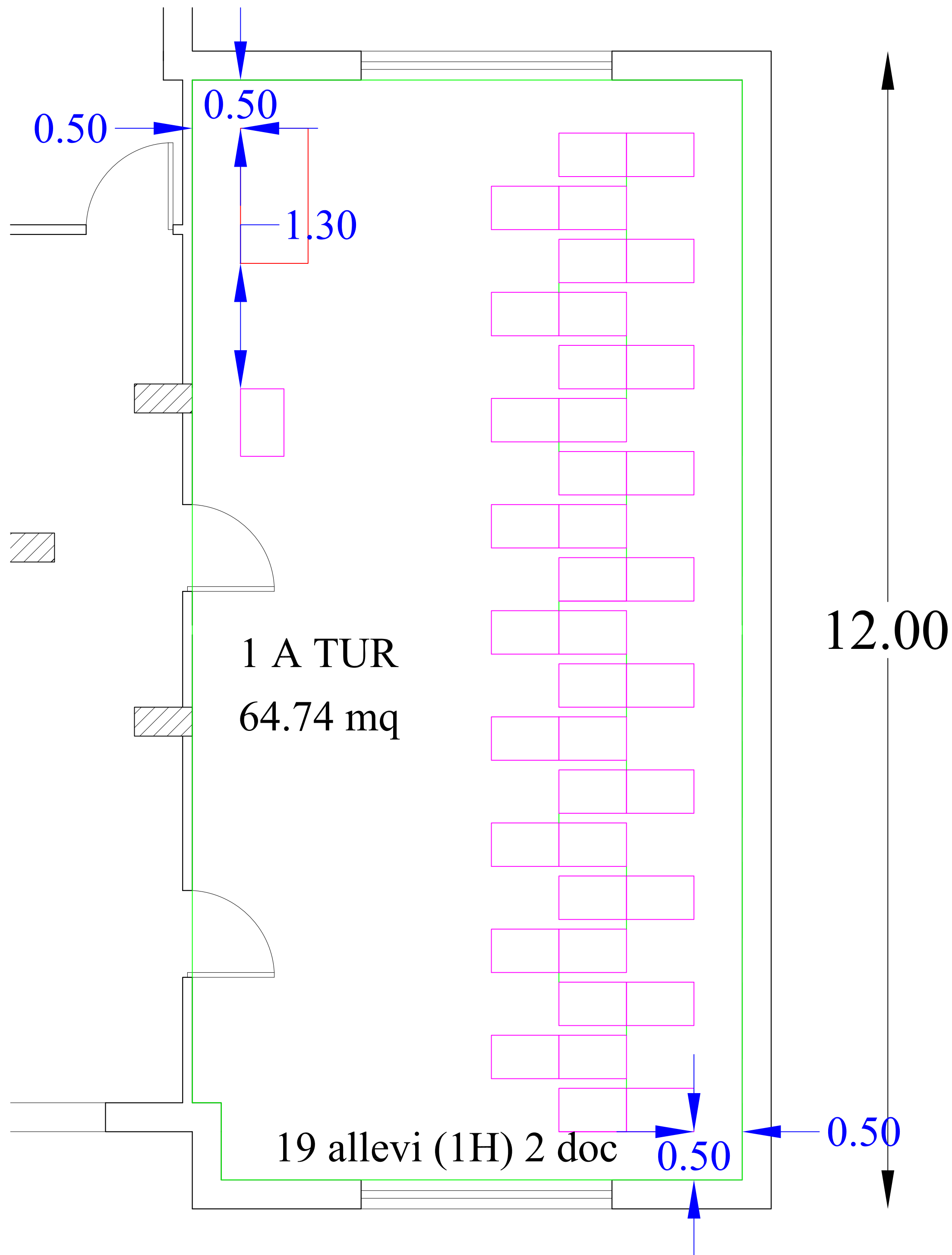


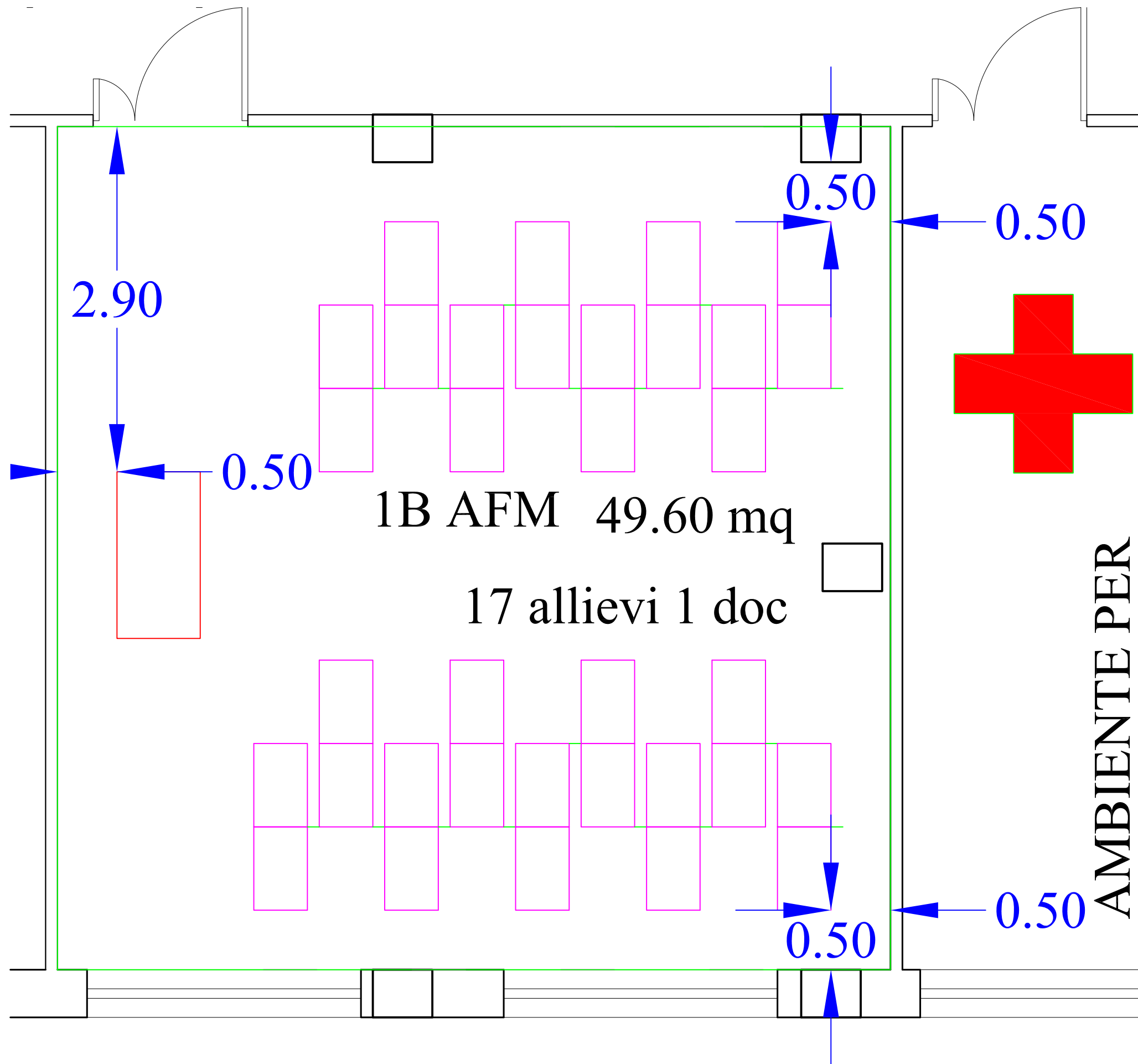
0.60



PLANIMETRIE DI DETTAGLIO SISTEMAZIONE  
CLASSI BIENNIO ITC







2.90

0.50

0.50

0.50

1B AFM 49.60 mq

17 allievi 1 doc

0.50

0.50

AMBIENTE PER

