



ISTITUTO ISTRUZIONE SUPERIORE ITAS ITC
ROSSANO



☎ 0983/511227 📠 0983/290689

CSIS04600Q - C.F. 97022350785

www.itasitcrossano.edu.it

E-MAIL: csis04600q@istruzione.it csis04600q@pec.istruzione.it



DISPOSIZIONI PER L'AVVIO DELL'ANNO SCOLASTICO 2021 - 2022

RISCHIO BIOLOGICO DA ESPOSIZIONE SARS-CoV2
PIANO UTILIZZAZIONE LOCALI PLESSI ITAS-ITC

PLANIMETRIE SISTEMAZIONI AULE PLESSI ITAS - ITC

DIRIGENTE SCOLASTICO
D.SSA ANNA MARIA DI CIANNI

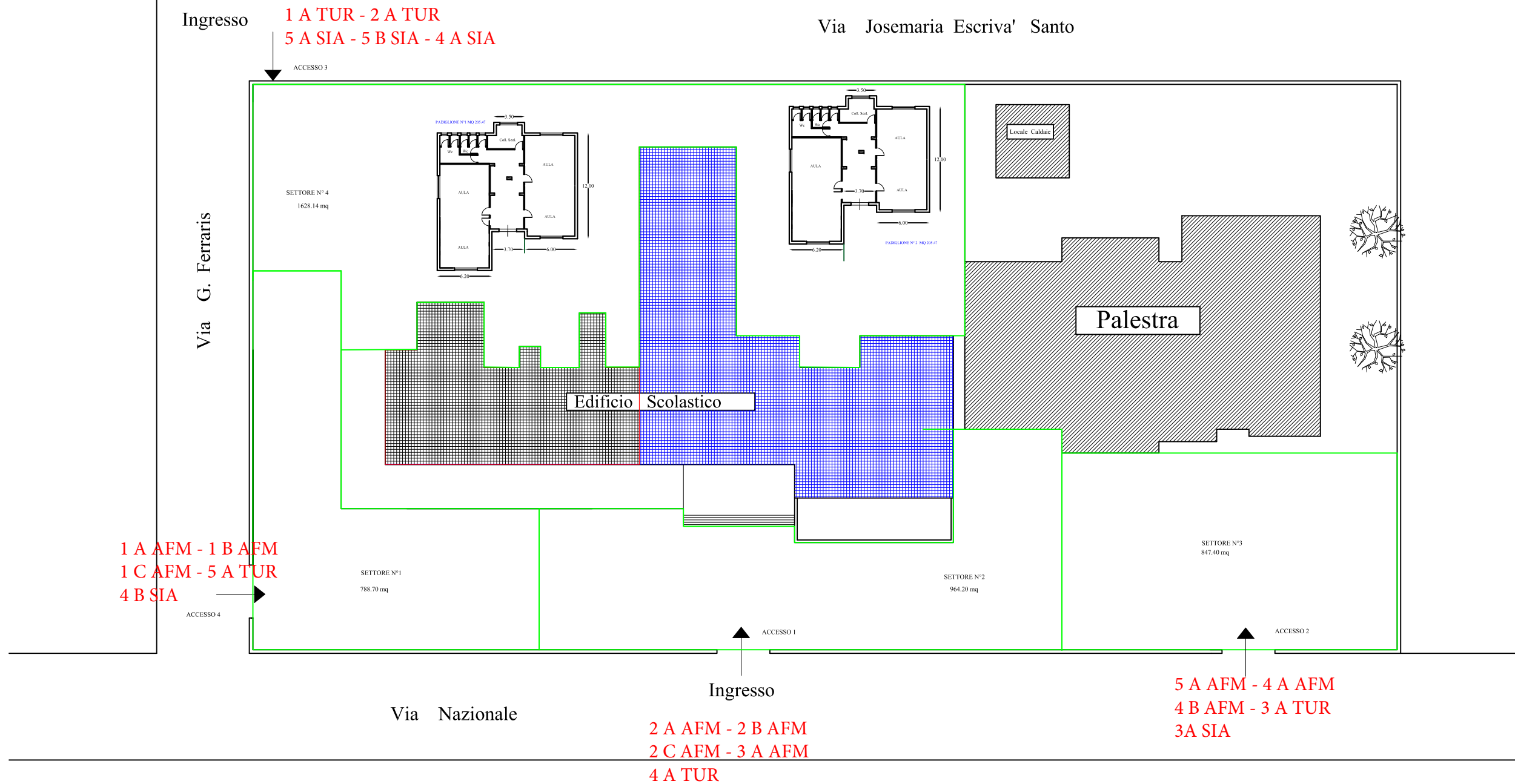
RSPP
ING. ROCCO TASSONE

MEDICO COMPETENTE

RLS
SIG. COSIMO CAPALBO

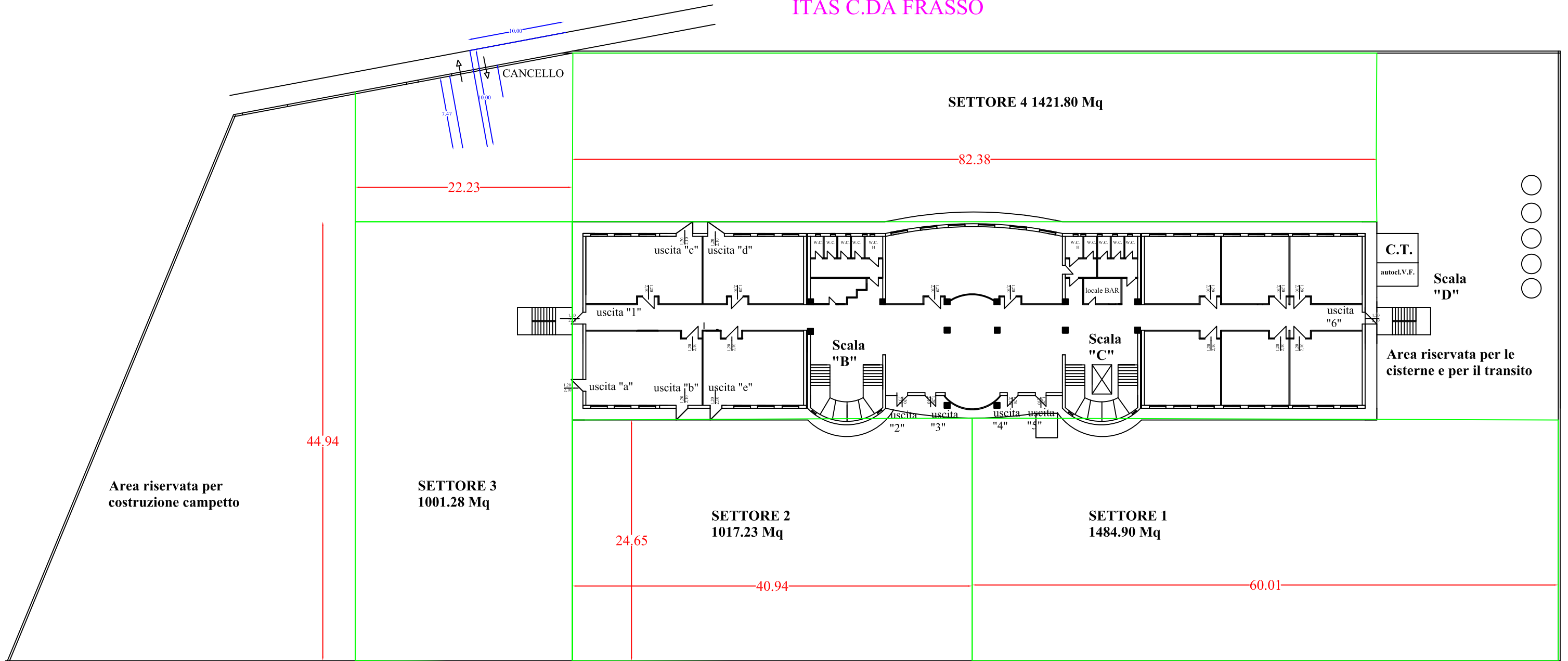
ROSSANO:16/09/2021

PLANIMETRIA GENERALE PLESSO ITC VIA NAZIONALE



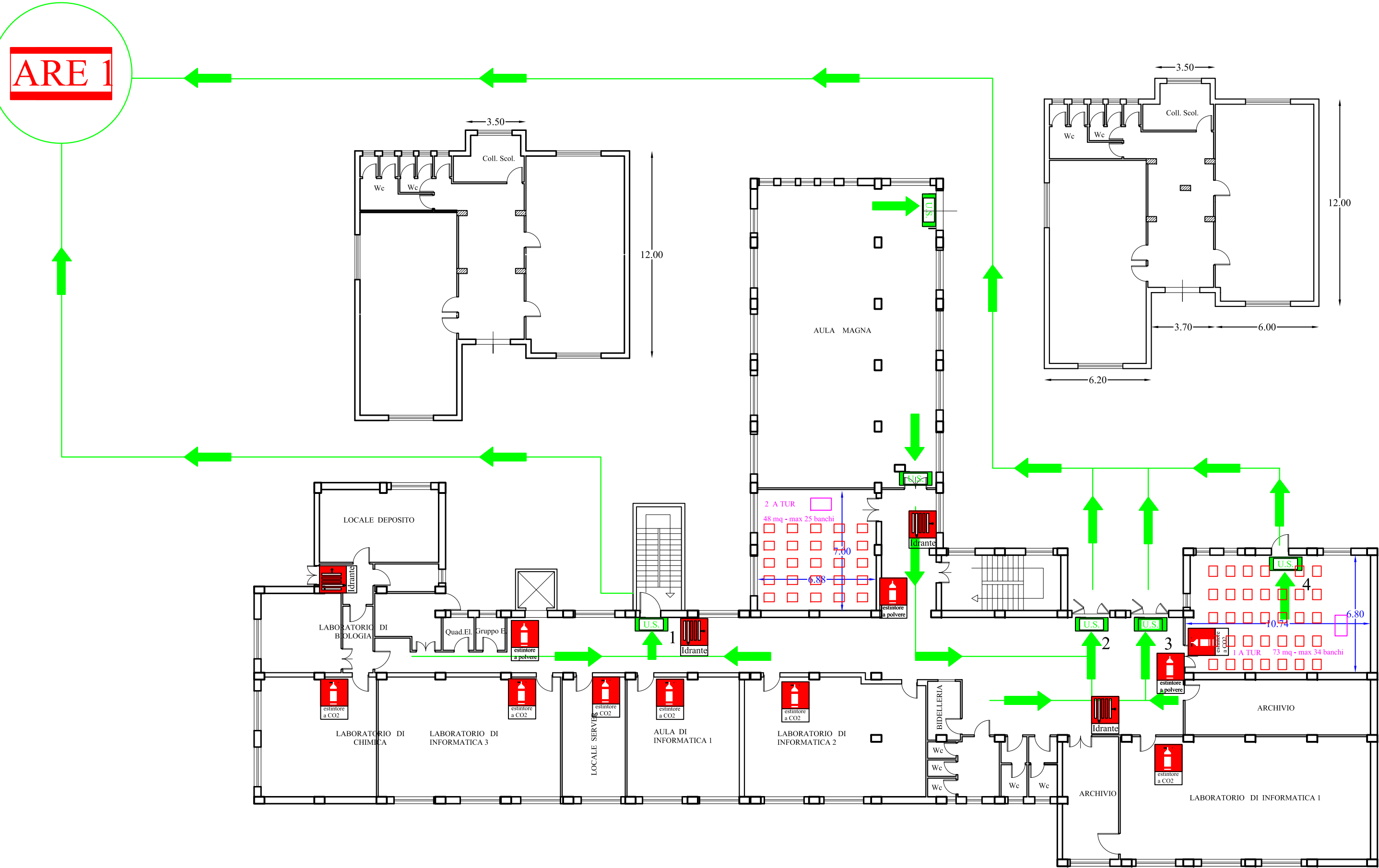
PLANIMETRIA GENERALE

ITAS C.DA FRASSO



ITC

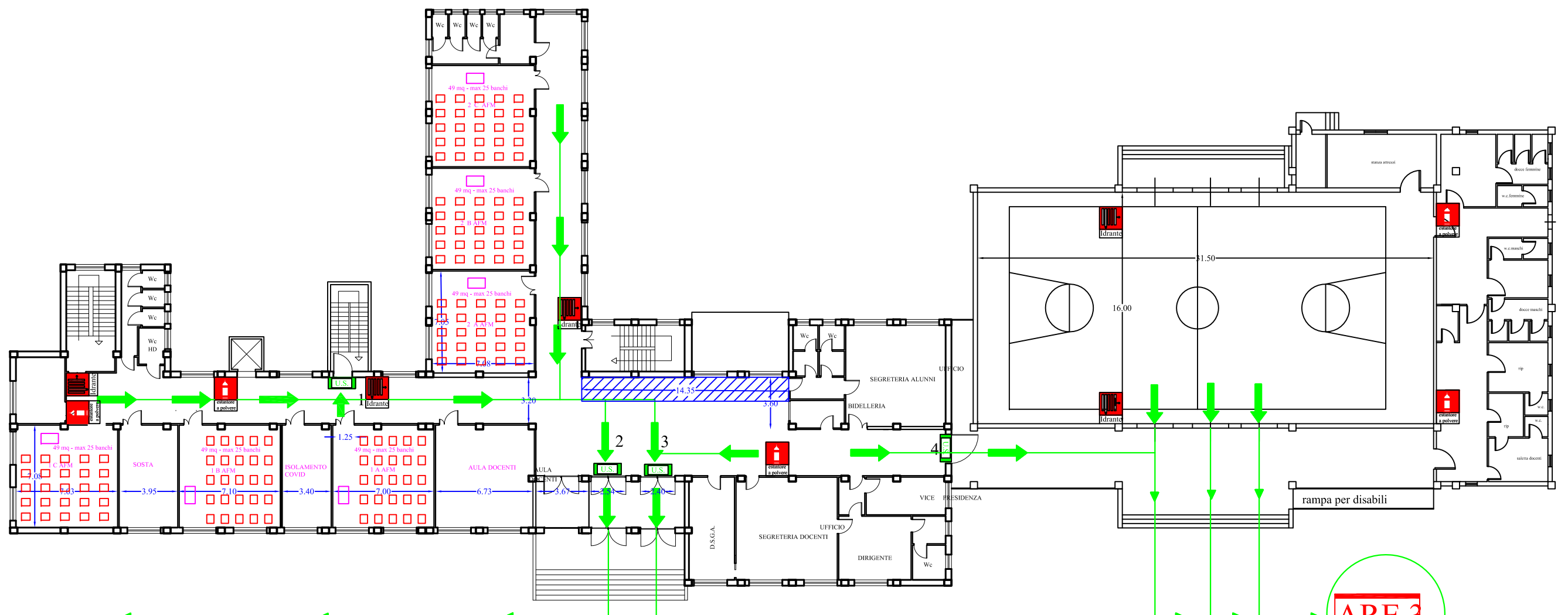
PIANO SEMINTERRATO



ITC

PIANO RIALZATO

PALESTRA



ARE 2

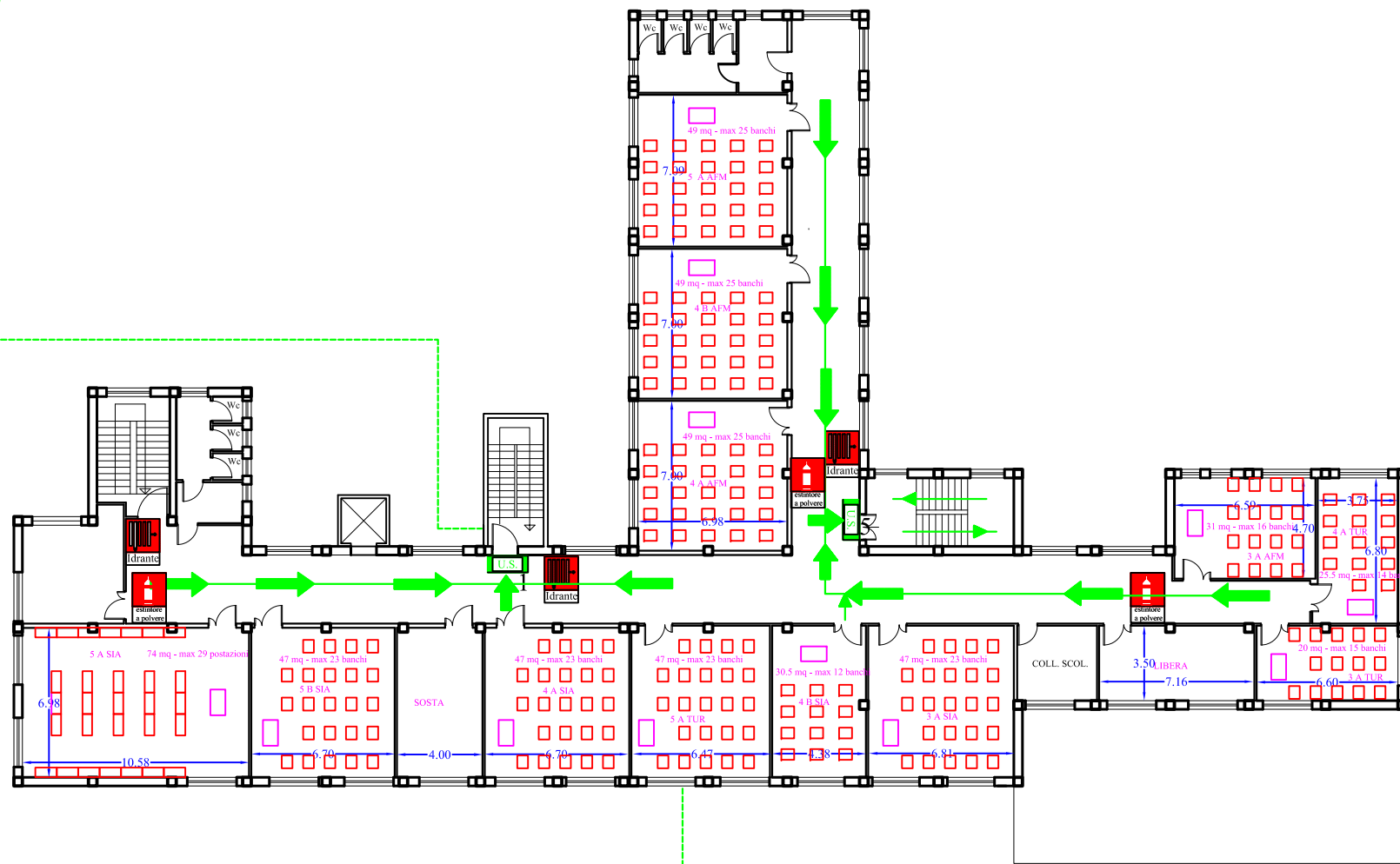
ARE 3



ITC

PIANO PRIMO

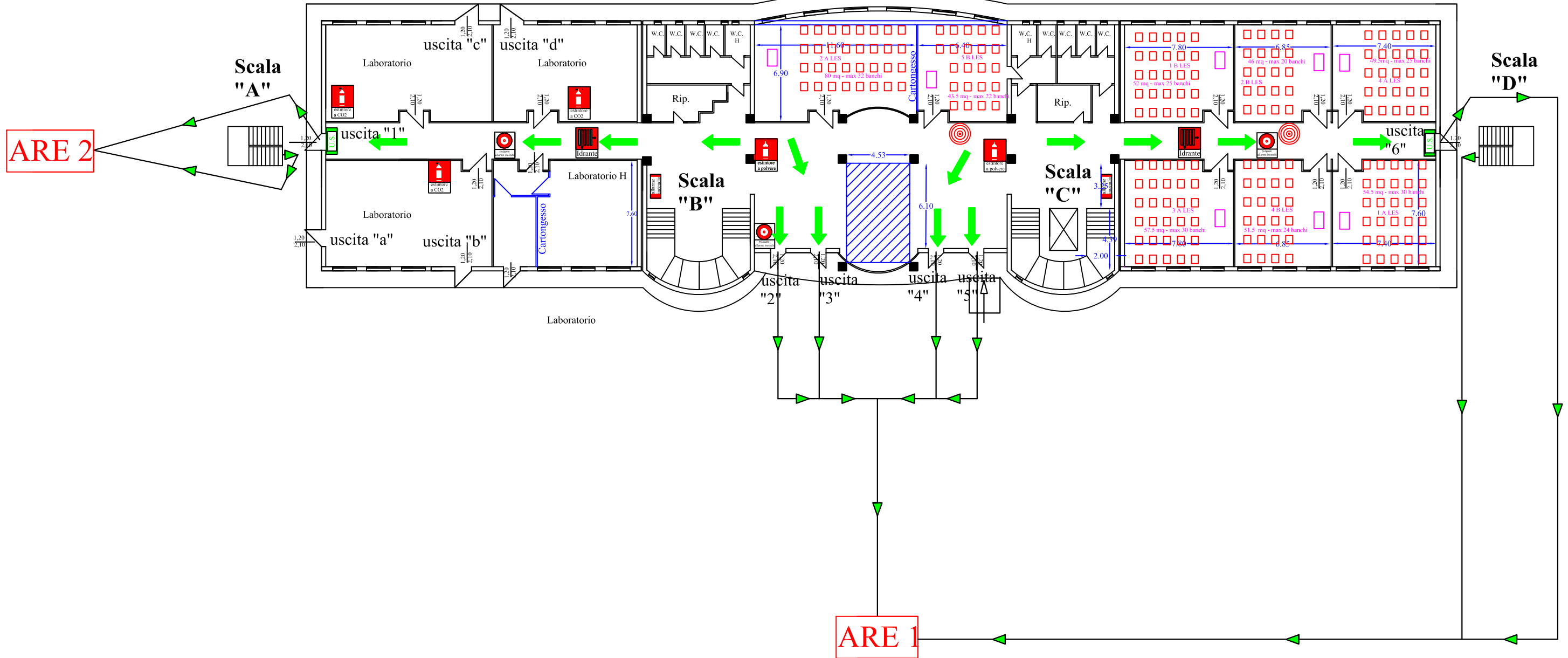
ARE 1



ARE 3

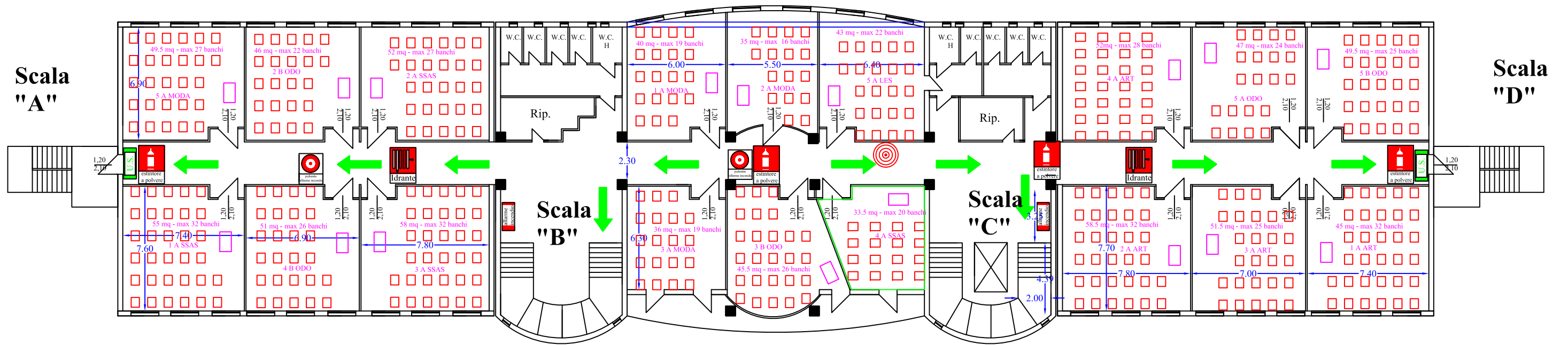
ITAS

PIANO TERRA



ITAS

PIANO PRIMO



ITC

PIANO SECONDO

